

Home in Detail

AN EDITORIAL MONTHLY BY MOONBOUND

VOLUME I · ISSUE I · SPRING 2026

INSIDE THE VALLEY MISSION REMODEL

A Kitchen Designed in the Details

How a quiet remodel on the northern edge of the Central Valley became a study in restraint, proportion, and craftsmanship.

HOMEINDETAIL.COM · VALLEY MISSION EDITION

ADVERTISEMENT

This or That



1



2



Whichever you choose, we build it.

Hometown Stone designs and installs stone, tile, and flooring across the Central Valley. Old-school craftsmanship, modern reliability, fully licensed and insured.

Call [\(209\) 238-2597](tel:(209)238-2597) or visit hometownstone.com

615 KANSAS AVE, SUITE B, MODESTO CA · CSLB #1117563

Home in Detail

AN EDITORIAL MONTHLY BY MOONBOUND

EDITION THE VALLEY MISSION REMODEL
VOLUME ONE · ISSUE ONE · DATE SPRING 2026
DESIGN JOSE ZAMORA, KITCHEN HOME AND BATH
CONSTRUCTION KHB CONSTRUCTION
PHOTOGRAPHY MOONBOUND

IN THIS EDITION

I.	<i>The Scope of Transformation</i>	06
II.	<i>Design Philosophy & Aesthetic</i>	07
III.	<i>Functional Considerations</i>	10
IV.	<i>Precision & Craftsmanship</i>	12
V.	<i>Architectural Language</i>	14
VI.	<i>A Vision Realized</i>	17





A Kitchen Designed in the Details

At first glance, the kitchen feels calm. The closer you get, the more the room begins to reveal itself.

WORDS JOSE ZAMORA & RYAN KELLY · PHOTOGRAPHY MOONBOUND

At first glance, the kitchen feels calm. It does not announce itself loudly or fight for attention inside the home. It sits softly within the larger space, bright, open, and balanced. But the closer you get, the more the room starts to reveal itself. The proportions, the materials, the cabinetry, the hidden storage, the arches, the stone, even the way the light moves across the room all point to a remodel that was never just about replacing a kitchen. It was about reshaping the way the home feels.

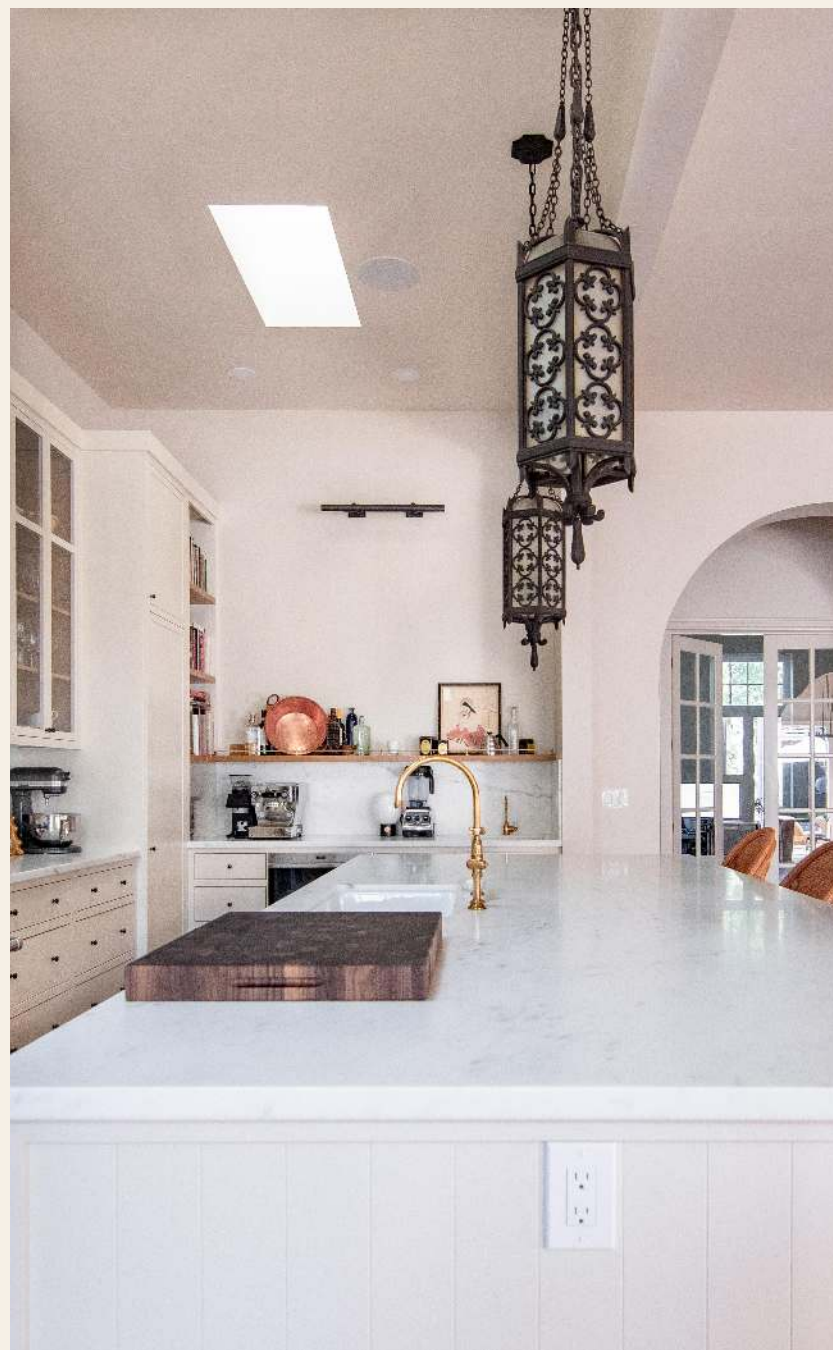
PART I

The Scope of Transformation

What began as a kitchen remodel eventually became a larger transformation of the home's main living areas. The original scope called for a full kitchen demo, new cabinetry, countertops, appliances, electrical work, and changes to the entry and hallway.

But as the project developed, the opportunity became bigger. Flooring expanded beyond the kitchen into the living room, office, hallway, and entry. A fireplace was added. The office received a new French door. The entry was reframed into a more open, gracious arrival point.

Skylights were brought into the kitchen to fill the space with natural light. The result is a home that feels more connected, more intentional, and more architecturally complete.



Arches and openness. A side view of the kitchen reveals how the new framing connects the cooking core to the dining room and beyond.





A calibrated calm. Plain-sliced white oak inside the upper cabinets meets the home's flooring, while solid bronze hardware adds weight and a sense of age.

PART II

Design Philosophy & Aesthetic

The design direction came from a specific balance: rustic Mexican modernism, Italian Tuscan influence, and a lighter modern sensibility, not entirely out of place on the northern edge of California's Central Valley.

The goal was not to create a farmhouse kitchen or an English countryside look. It was to create a common living space with an instant wow factor, warmer and more refined, built on restraint and function. The kitchen needed to feel timeless without feeling heavy, elegant without feeling precious, bright without becoming sterile.

ADVERTISEMENT

**NEXT
DAY
FIX**

**EPOXY GARAGE
FLOORS, DONE RIGHT.**

Showroom-grade flake finish. Sealed, scratch-resistant, walk on it the next day. Licensed, insured, flat-rate quote in 24 hours.

(209) 764-2055
NDFIX.COM · C.S.L.B #1070537

Quiet From Afar, Detailed Up Close

That restraint became one of the defining ideas of the project. From across the room the cabinetry nearly recedes into the architecture. The walls and cabinets share a similar tone, so the kitchen sits quietly within the open space instead of overpowering it.

Up close, the details begin to unfold. The island wears custom V-groove paneling. Cabinet profiles were reduced and simplified, with slab fronts wherever possible to keep the rhythm clean. Solid bronze hardware adds warmth and a sense of age that will keep developing over time.

Inside the upper cabinets, plain-sliced white oak was chosen to match the flooring, a connection most people feel before they notice it.

Oak within. Plain-sliced white oak lines the glass-front uppers, color-matched to the floors.

It feels like it was always there.

ON THE CABINERY





A WORKING HEART

A solid bronze pot filler, the marble run, and a Wolf range with red-knob accents. Built for the way the client actually cooks.

Functional Considerations

That same level of thought carried into the function of the space. Storage was never an afterthought. The client's individual spice bottles were measured, and her reach height considered. Drawers were organized around the way she actually cooks, with custom maple compartments for knives, utensils, foil, parchment, and everyday tools. A hidden spice rack was built just for her, and a tea caddy tucked away.

One cabinet was prepared for a future ice machine, the plumbing already run and concealed until she decides to use it. Even the cabinet floors beneath the plumbing were fitted with spill-proof mats. This kitchen was designed not only for the photograph, but for the reality of daily life.



A place for everything. Custom maple compartments, cut to the client's own knives, utensils, foil, and parchment.

The Working Details



The pantry. Deep and deliberate, stocked to the way the family actually cooks.



Hidden in plain sight. The coffee bar conceals a pull-out bin and the rough-in for a future ice machine.

ADVERTISEMENT

promptSUB

Same AI.
Wildly different results.

200+ contractor-specific AI prompts for ChatGPT, Claude, and any tool. Built for the trades, not Silicon Valley.

Start at promptsub.com

From \$9.99/mo · Cancel anytime

× WHAT MOST CONTRACTORS TYPE

"Write me a follow-up email for a lead."

Vague. Generic. Gets ignored.

✓ WHAT PROMPTSUB GIVES YOU

"Write a follow-up email to a homeowner who requested a kitchen remodel estimate 3 days ago. I'm a licensed GC in Denver, CO. Tone: professional but warm. Add a soft urgency hook about booking before spring. Keep it under 150 words."

Specific. Contextual. Books the job.

PART IV

Precision & Craftsmanship

The island became the clearest example of the project's precision. What looks simple was carefully calculated. The panel spacing had to account for outlets, drawer pulls, dishwasher handles, and the way the doors would read when closed. The figure that made all of it land cleanly was four and three-eighths of an inch, and every panel was built to it.

The stone was handled with the same care. The Carrera marble was selected and laid out with the client on site, with attention to how the veining would travel across the island. Because of the island's size a seam was unavoidable, so the slabs were book-matched, turning a compromise into something that looks intentional. The marble reads continuous, calm, and tailored to the room.

Rhythm. The V-groove island, spaced so hardware and outlets fall on center.





PRECISION

Four and three-eighths of an inch, the measure that lets the island read as a single, quiet object.

PART V

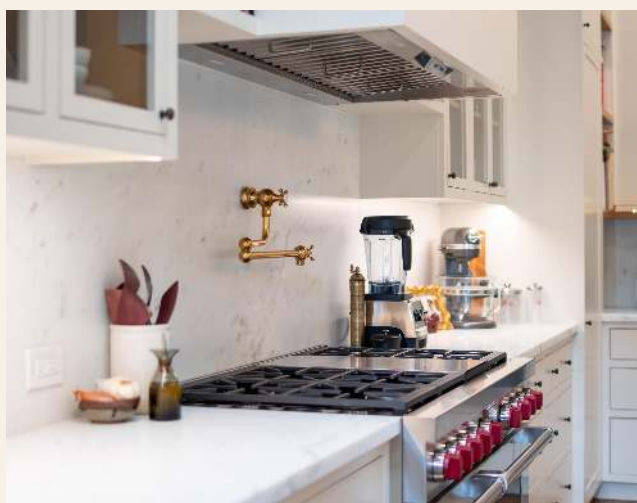
Architectural Language

The remodel introduced a stronger architectural language through the surrounding spaces. The plan began with three arches; during the work it became two, framing the adjoining windows more cleanly and improving the balance of the room.

Matching arches were added on the office side so the two spaces could speak to each other. A new French door gave the office presence, and the front entry opened into a more gracious arrival.



Brass, aging. Unlacquered hooks left to wear with time.



Iron over oak. The dining chandeliers finish a clean run of light from one end of the home to the other.



The bar. Brass, marble, and morning light off the coffee station.

In the dining area, a custom buffet brings a deeper, wine-toned color against the lighter kitchen, tying together the bronze, the chandeliers, and the wood nearby. It keeps the home from reading too bright, and gives the space depth.

The fireplace added another layer. More than a decorative feature, it was framed, fireproofed, recessed, vented, and aligned with the architecture around it, a working gas fireplace hidden behind a clean, centered face.

ADVERTISEMENT

SMB DEV GRU

SYSTEMS & PROFIT

One seat
per sector.

A systems-first peer group for small-business operators. We build the systems and AI that turn into profit.

Systems that pay for themselves

One operator per industry

Referrals tracked in dollars

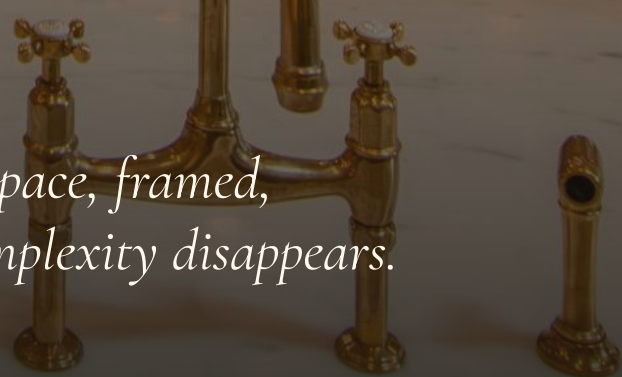
Is your seat still open?

Apply at smbdevco.com



THE GREAT ROOM

The fireplace anchors the living space, framed, vented, and aligned until the complexity disappears.



PART VI

A Vision Realized

The home feels easy now, an elegant place to sit back and enjoy the Santa Anas sweeping in through the French doors. But it was not easy to get here.

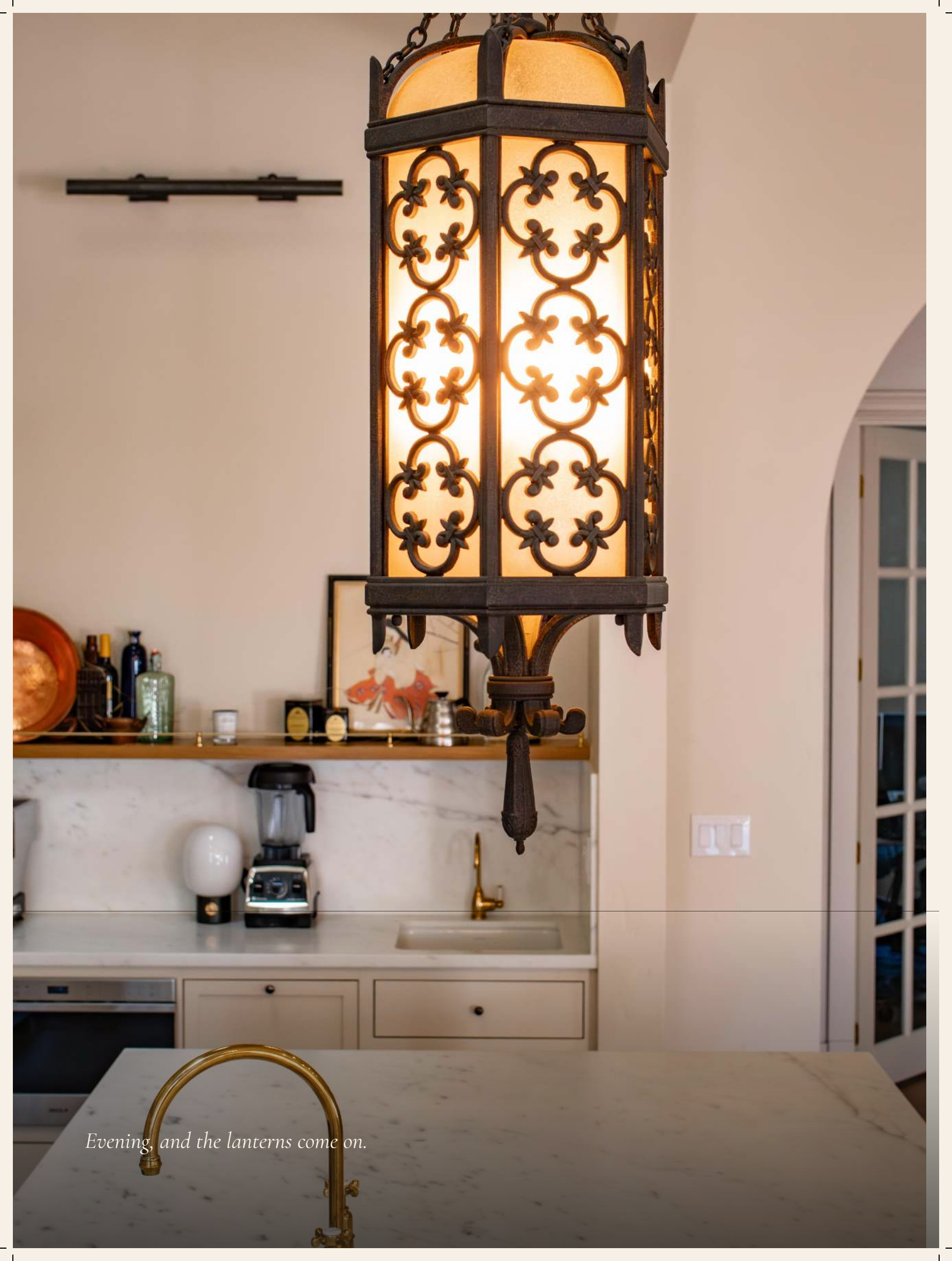
The symmetry, the material transitions, the flooring and lighting layout: they were all carefully planned and meticulously executed. The made-to-measure cabinetry, the archways, and the hidden storage compartments were all planned and crafted by local skilled artisans.

The client played an important role. As the project grew, she remained engaged, creative, and clear. When new opportunities presented themselves, she understood that added scope meant added time. That trust helped the project evolve without losing direction.

In the end, this remodel became more than a new kitchen. It became a study in restraint, proportion, warmth, and craftsmanship. A home designed not just to be seen, but to be lived in, used, and discovered over time.

— *Home in Detail*

END OF FEATURE



Evening, and the lanterns come on.

ADVERTISEMENT



*You just read
what we build.*

Every kitchen, bath, and whole-home remodel in these pages was designed and built by Kitchen Home & Bath. Transforming spaces, creating homes — and the next one could be yours.

[Request a Consultation](#)

KITCHENHOMEANDBATH.COM · (209) 528-0255 · MODESTO & PLEASANTON

A photograph of a kitchen corner. The scene is dominated by white cabinetry with a classic shaker-style design. A large window on the right side of the frame allows natural light to enter, showing a glimpse of greenery outside. On the wall to the left of the cabinets, a copper pan hangs from a brass hook. Below the pan, a small decorative object is visible. In the foreground, a framed piece of art or a mirror is partially visible, resting on a surface. The overall atmosphere is warm and inviting, with soft lighting and a focus on architectural details and materials.

Home in Detail

AN EDITORIAL MONTHLY BY MOONBOUND

In every issue we look closely at one project. The bones, the materials, the hands that built it. Always quiet. Always honest. Always in the details.

HOMEINDETAIL.COM